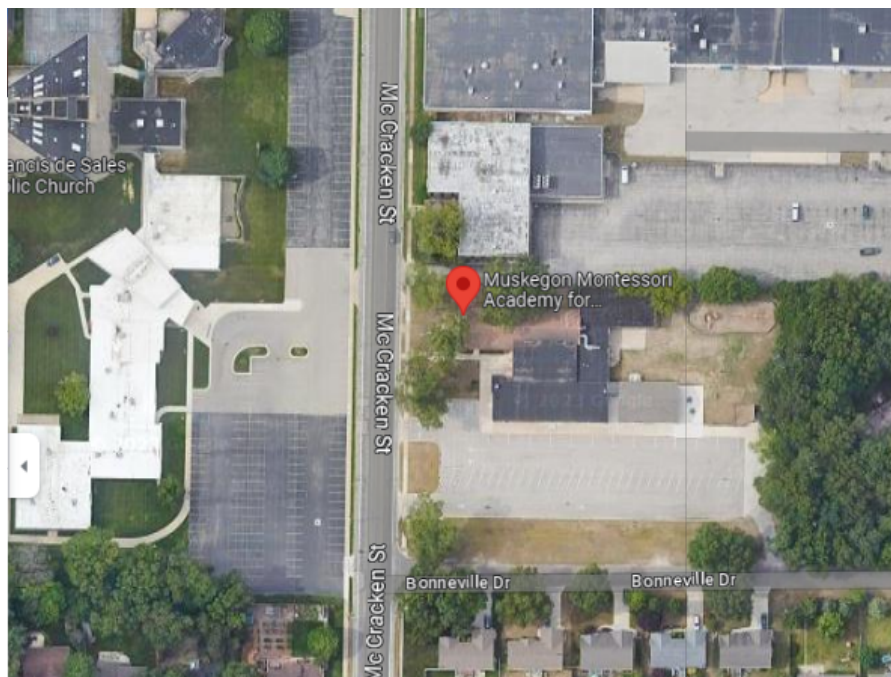


# MMAEC Student Pick-Up Expectations

In July, we were fortunate to have SEC (Secure Education Consultants (School Safety company) come on to our campus and provide us with a safety audit. One of the concerns we discussed with them was our student drop-off/pick-up procedures. We will be making a few of their recommended changes to improve this procedure for the safety of our students and families. ***We appreciate your understanding and cooperation on making this procedure safer for our students.***



1. Cars will enter into the parking lot and will proceed around the one way lanes toward the designated drop off areas. A ***staff member will be at the back of the lot*** near the playground and will ***ask each car for the name of the student(s)*** being picked up. The staff member will ***also ask your driver's name and relation to said student(s)***. We ask that ***students enter vehicles on the curb/sidewalk side only***. We also request that ***parents remain in the vehicles*** and proceed from the lot in an orderly fashion to exit the parking lot.

*Where Grace and Courtesy Goes a Long Way*



2. We request that all vehicles exiting the parking lot make a ***RIGHT TURN ONLY (Between 3:30pm & 3:50pm)***. This will alleviate congestion for vehicles attempting to turn left and will avoid congestion in the left turn lane entering the parking lot.
3. We ask that families **NOT** pick their student(s) up in the church parking lot across the street, as this is ***not a safe practice to have students crossing the street with no marked crossing walk and no crossing guards present.***
4. If a family has to enter the school for office purposes, please park in the staff parking area designated on the map above.
5. To help with the flow of traffic, we encourage ***families not to park in the teacher/guest parking area, exit vehicles and walk to collect your student(s) from the assigned teacher,*** as we desire to reduce any foot traffic in the vehicle lanes.